

One day tour

ICMSN 2025 & ICAMM 2025





DISCLAIMER

Please note that our conference is only responsible for organizing the one-day tour. While we provide transportation and tour guide service for the recommended itineraries, participants are responsible for their own safety, personal belongings, and timely return to meeting points. Some attractions may have separate entrance fees, which are not included in our package.

Time

8:30 am-18:30 pm, July 11th, 2025

Gathering Time & Meeting Point

Please wait for further notice.

One-day Tour Route

Windsor Castle （State Apartments & Queen Mary's Dolls' House & St George's Chapel）

Cotswolds （Cotswold Lavender & The Model Village）

One-day Tour Cost

132 USD per person

Include: Transportation, Tour Guide

Exclude: Meals and Self-funded Projects

(Notice: The minimum size of our group is 6 guests. If there are less than 6 people applying to join in, we will cancel the one-day tour and you could reschedule your time.)



Windsor Castle



STATE APARTMENTS

Ceremonial Rooms

The ceremonial rooms are the main State Apartments that are used today by the Royal Family. Within these rooms the monarch hosts official visits by Heads of State from other countries, investitures, and awards ceremonies, where people from all walks of life are recognised for their achievements.

Perhaps the most striking room is the Grand Reception Room. With its chandeliers and gilding it was once used as the main ballroom in the Castle. One object you can't miss in this room is the large malachite urn, presented to Queen Victoria by Tsar Nicholas I in 1839, and one of the largest examples outside Russia. Looking around the gold-covered walls and ceilings it's hard to believe that this room was so severely damaged in the fire of 1992. The room was painstakingly repaired to its former glory, which you can see today.



**Grand Reception
Room**

Historic Rooms

The historic rooms were built for Charles II and his Queen, Catherine of Braganza. These rooms follow the pattern established in English palaces over hundreds of years; a series of rooms getting smaller as they get closer to the most private spaces. Admission was strictly controlled so that only the most important people in the court had access to the king and queen.

Charles II set out to rival the achievements of his cousin, Louis XIV, at Versailles in France. In the 17th century he modernised the Castle's interiors, which became the grandest State Apartments in England, with painted ceilings by Antonio Verrio and carvings by Grinling Gibbons.

Since then the rooms have been changed significantly. Many of the painted ceilings were covered with ornamental plaster under the direction of architect Sir Jeffry Wyattville, who worked for George IV. The Grand Reception Room is an example of a gilded plaster ceiling, which was recreated after the Windsor Castle fire.

The State Apartments are furnished with some of the finest works of art from the Royal Collection, including paintings by Holbein, Van Dyck and Rubens. Many of the works of art are still in the historic settings for which they were first collected or commissioned by the kings and queens who lived at Windsor.



The Queen's Drawing Room at Windsor Castle



**Ceiling painting showing Catherine of Braganza,
wife of Charles II**



Queen Mary's Dolls' House



Queen Mary's Dolls' House was built between 1921 and 1924 for Queen Mary, wife of George V, by the leading British architect Sir Edwin Lutyens. It includes contributions from over 1,500 of the finest artists, craftspeople and manufacturers of the early 20th century. The House is on permanent display at Windsor Castle.

From life below stairs to the royal setting of the saloon and dining room, and from a library bursting with original works by famous literary names of the day, to a fully stocked wine cellar and a garden, no detail was forgotten. The house even includes electricity, running water, and working lifts. Each room is fully furnished and waiting to be explored.





St George's Chapel



St George's Chapel within the grounds of Windsor Castle is one of the finest examples of Gothic architecture in England. Construction of the present Chapel began in 1475 under the reign of Edward IV.

When visiting make sure you look up and admire the stone ceiling, which was added by Henry VII.

The Chapel has been the location of many royal weddings including TRH The Earl and Countess of Wessex, The Duke and Duchess of Sussex, and HRH Princess Eugenie and Mr Jack Brooksbank. The Chapel is the spiritual home of the Order of the Garter, the senior order of British Chivalry established in 1348 by Edward III.



Within the Chapel are the tombs of 11 monarchs, including Queen Elizabeth II, George VI, Henry VIII and Charles I. Among the many monuments in the Chapel, look out for the spectacular marble memorial by Matthew Wyatt to George IV's only child, Princess Charlotte, who died in childbirth in 1817.

When the Castle is open (Thursday - Monday) the Chapel closes at 16:15 (last entry 16:00), in order to prepare for the evening church service at 17:15. The chapel is closed to visitors on Sundays as services are held throughout the day. Worshippers are welcome to attend the services.





Cotswolds



Cotswolds is located in the west of England. It is a general term for a region, roughly located in a pastoral area west of Oxford and north of Bath, about 160 kilometers from south to north.



Hundreds of ancient and elegant classic villages are perfectly preserved here. They are famous for their elegant colors, tranquil atmosphere, elegance, uniqueness, and traditional classics.

Together with Provence in France and Tuscany in Italy, they are known as "the three most beautiful villages in the world". At the same time, due to its geographical location and its representative British romantic pastoral scenery, Cotswolds is known as the "Heart of England" and is rated as a "Statutory Area of Special Natural Beauty" in the UK.



COTSWOLD LAVENDER

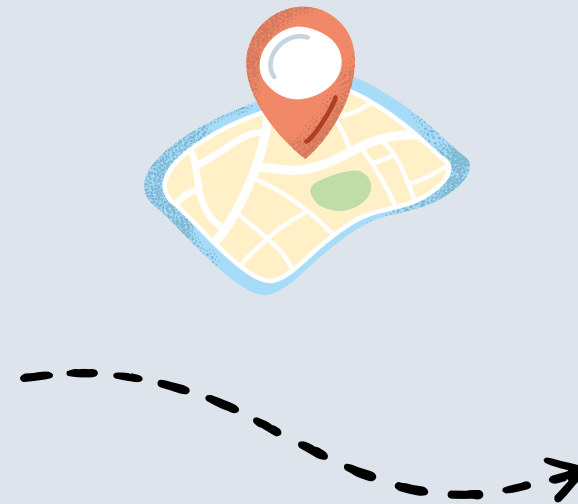


If you're visiting Cotswolds in the summer, don't miss a trip to the fragrant Cotswold Lavender fields.

Cotswold Lavender has over 40 different varieties of lavender and 500,000 plants, which thrive on the area's hilltop limestone soils.

There are lavender plants and products to buy - from lavender soaps and essential oils to lavender chocolate - as well as lots of photo opportunities among their sea of purple flowers.

You can see the distillery in action making lavender oil in late July/early August. And there's a wildflower field of brightly coloured blooms and a Beechwood Trail through the woods.



Lavender Fields

45 acres of lavender stretches across the rolling Cotswold landscape. At the height of summer you can relax and unwind exploring the stunning display of colour unique to the Cotswolds. Visitors can walk amongst the lavender and experience the heady scent of nature at its very best, all the while enjoying stunning views over Broadway and the Vale of Evesham.



Wildflower Meadows



Wildflowers love to grow in the Cotswolds and give a superb display of summer colour. From the rich red of the poppy to the delicate blue of the cornflower, nature provides its own rainbow of colours. The meadows there are a haven for wildlife and support a wide range of species including bees, butterflies and humming moths.



THE MODEL VILLAGE



Feel like a giant by exploring Bourton-on-the-Water in miniature at the Model Village. This is an exact replica of the village at one-ninth scale and is the country's only Grade II-listed model village. It features everything from Bourton's shops, pubs and houses to its two churches and tiny bridges across the River Windrush. The model village is located behind The Old New Inn on Rissington Road, and was created by a former landlord of the pub in the 1930s. It took over five years to build, with the help of local craftsmen who used Cotswold stone and slate to make each building as authentic as possible. It's kept up to date when new shops open, and even has its own one-ninth scale model village – with its own even smaller model village. There's also a model landscapes display and a small museum where you can learn about model-making skills and the model village's history.

